

STEPHEN PERRY SMITH ARCHITECTS

N88 W16447 MAIN STREET SUITE 400  
MENOMONEE FALLS, WISCONSIN 53051  
TELEPHONE: 262-437-4000  
FACSIMILE: 262-437-4001

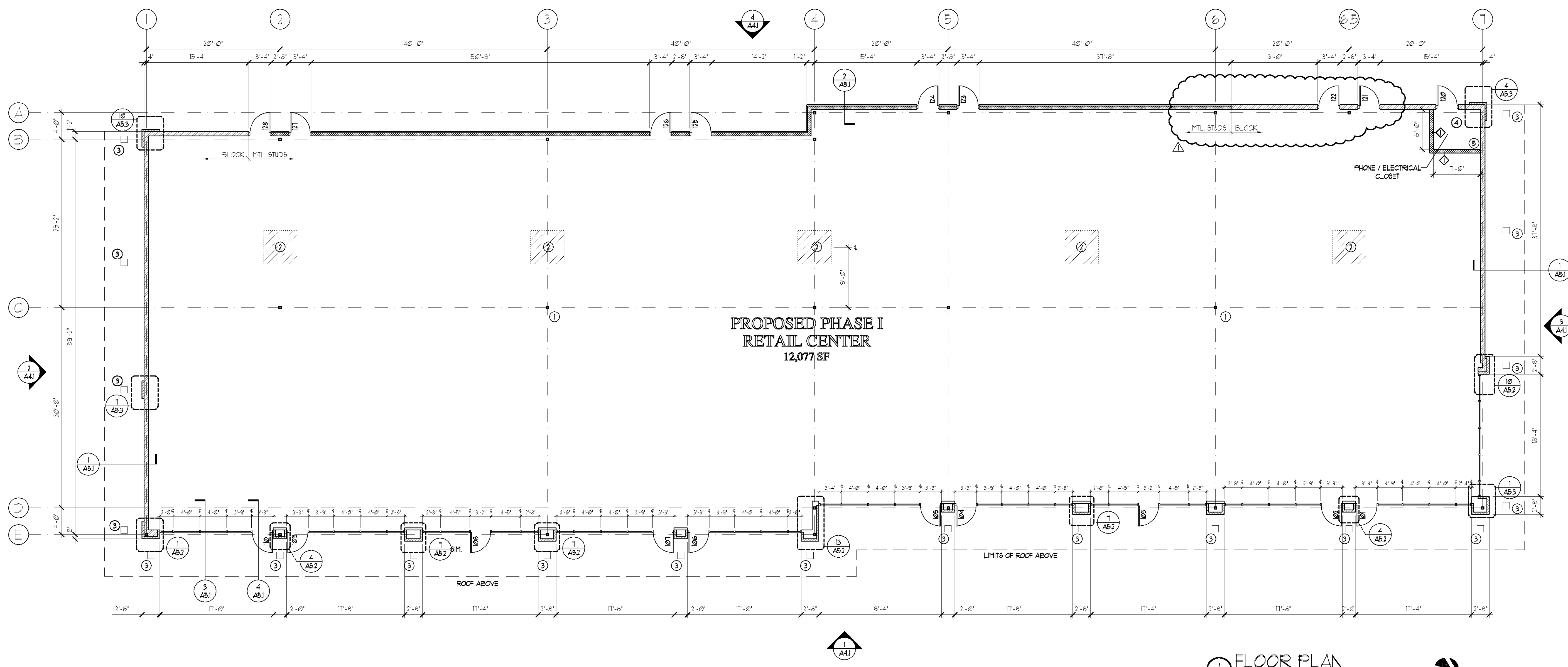
PROJECT

WATERFORD RETAIL CENTER

WESTERRA BUSINESS CAMPUS  
WATERFORD, WISCONSIN

OWNER

COOK AND COMPANY, LLC  
P.O. BOX 171005  
MILWAUKEE, WI 53217



1 FLOOR PLAN SCALE: 1/8" = 1'-0"

- PLAN KEYNOTES
- WALL HING FIRE EXTINGUISHER
  - 5'x8' LEAVE-OUT FOR FUTURE PLUMBING ACCESS
  - 1" SQUARE PREFINISHED RECESSED CAN W/ 150 WATT LIGHT AS SHOWN (CENTER ON COLUMN)
  - ELECTRICAL CONTRACTOR TO CONFIRM ROOM SIZE PRIOR TO CONSTRUCTION
  - PROVIDE A 4x8 SHEET OF PLYWOOD FOR PHONE

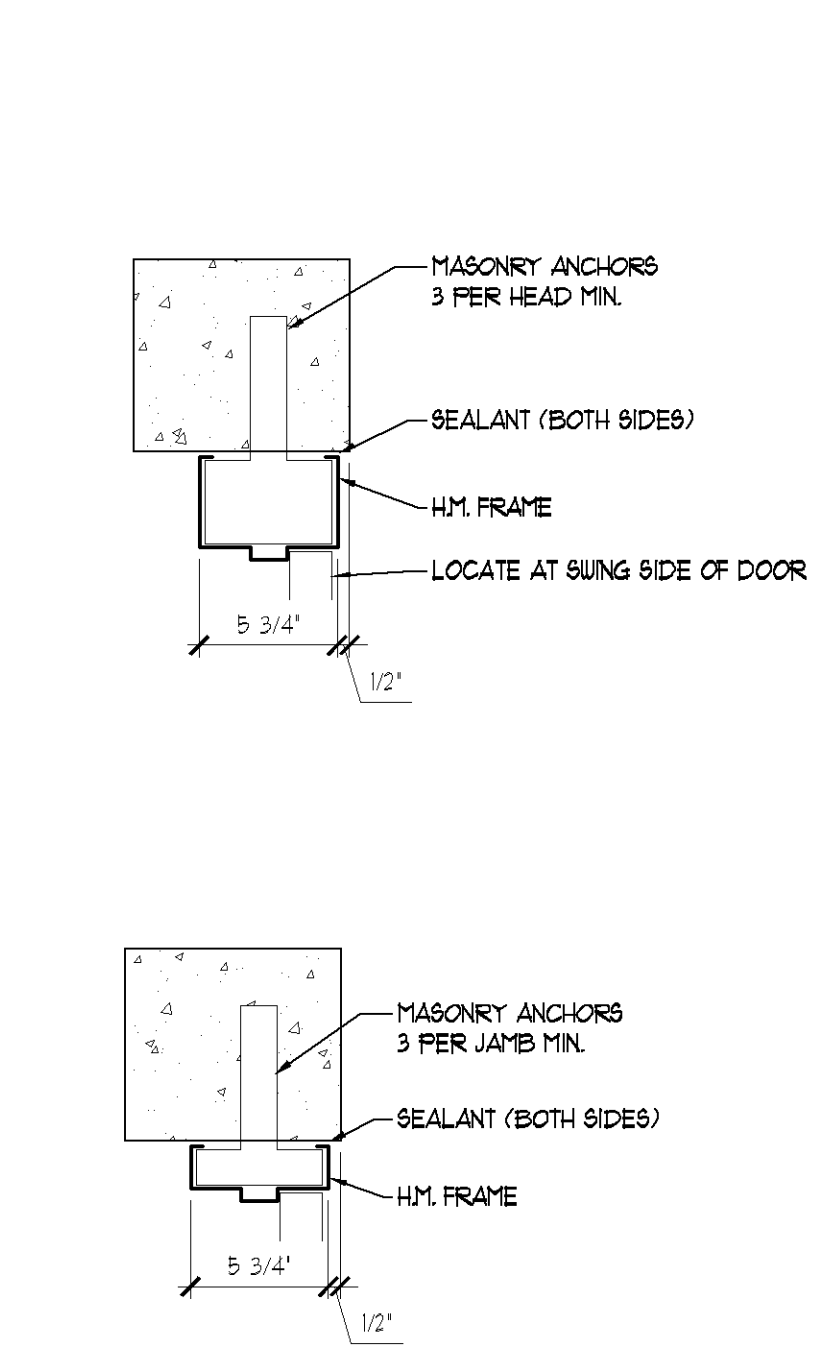
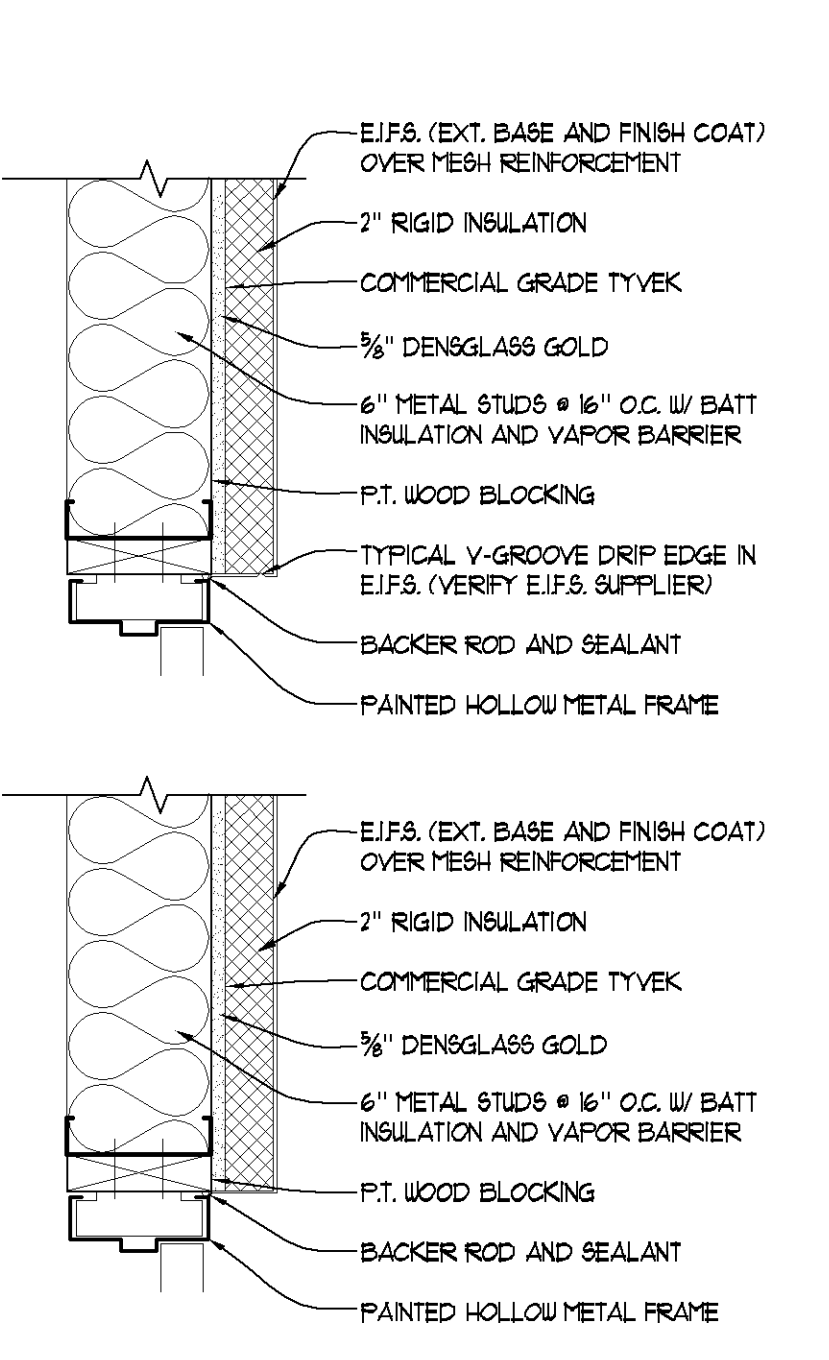
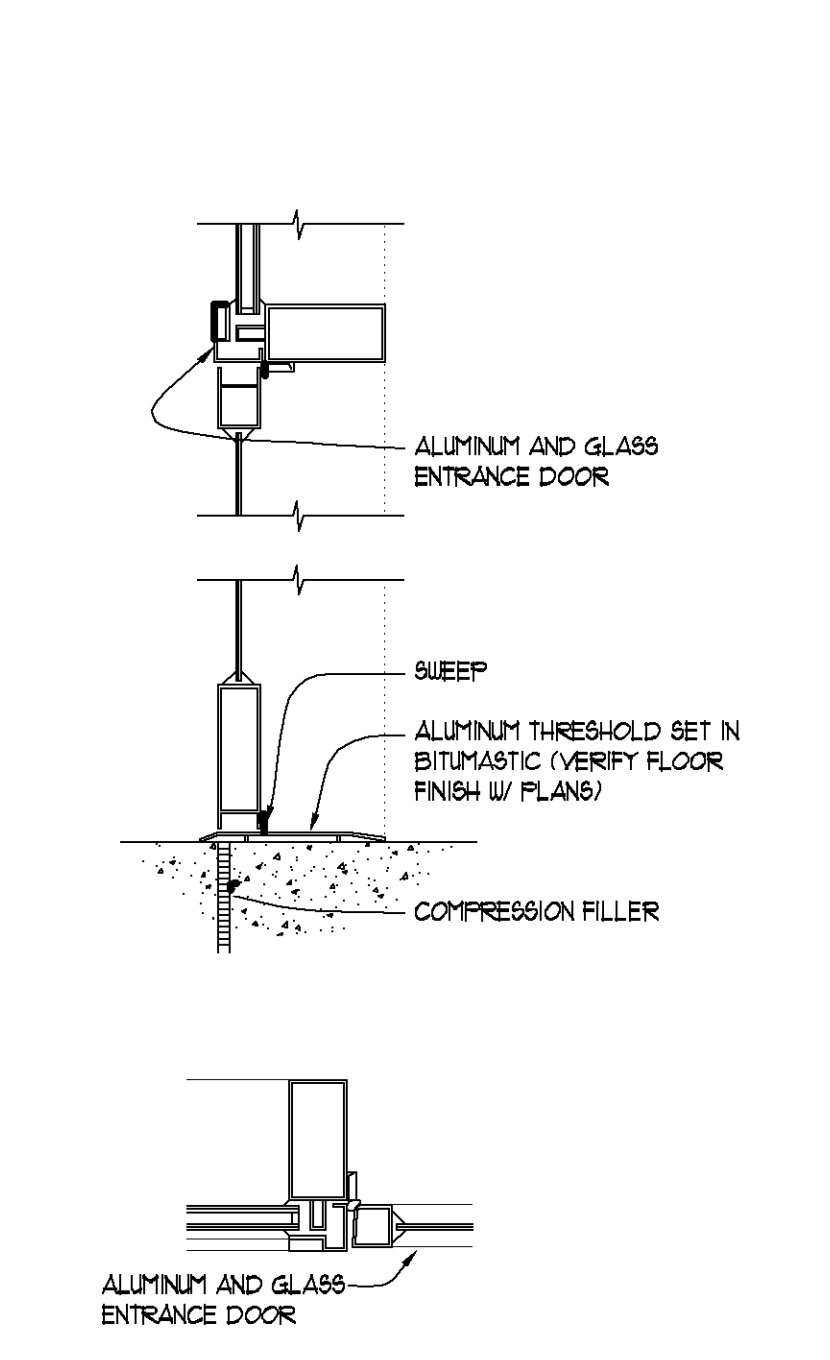
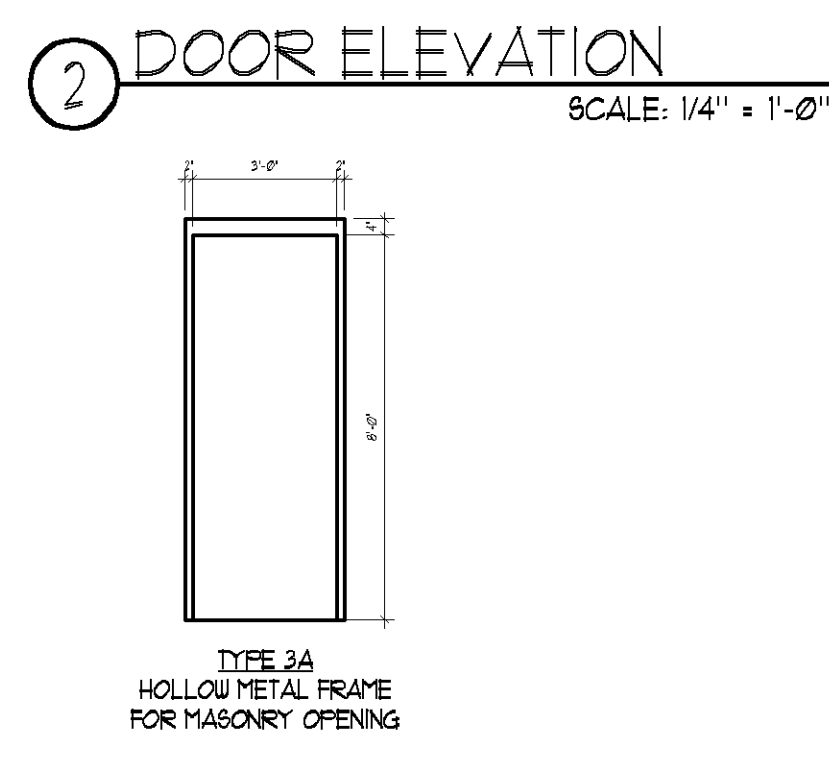
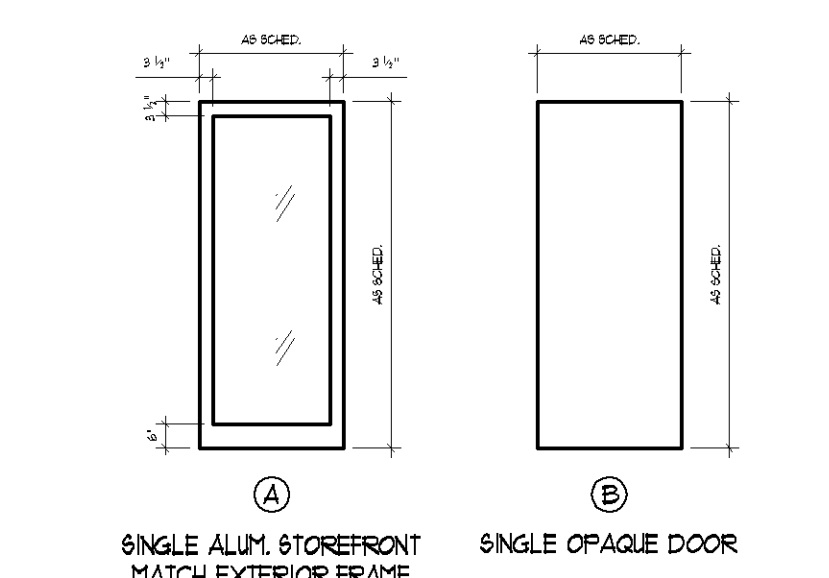
- WALL KEYNOTES
- 3-3/4" METAL STUDS @ 16" O.C. TO DECK W/ METAL RUNNER AND 2" SLIP TRACK HEAD, BATT INSULATION AND ONE LAYER OF 5/8" GIBB EACH SIDE APPLIED HORIZONTALLY W/ SCREWS 8" O.C. AT EDGES AND 16" O.C. IN FIELD. STAGGER ALL JOINTS ONE STUD SPACE.

HARDWARE GROUP

HARDWARE SET #1	HARDWARE SET #2
SINGLE STOREFRONT ENTRY DOORS-LOCK	EXTERIOR DOOR-LOCK
LOCK SET THRESHOLD CLOSER	LOCK SET W/ DUMMY PLATE THRESHOLD CLOSER
1-1/2 PAIRS B.B. BUTTS	1-1/2 PAIRS HEAVY DUTY B.B. BUTTS

DOOR & FRAME SCHEDULE

DOOR NUMBER	DOOR			FRAME					RATING	HARDWARE GROUP	REMARKS
	SIZE	TYPE	MATL.	FINISH	GLASS	TYPE	MATL.	FINISH			
101	3'-0" x 7'-0"	2A	AL/GL	-	1/4"	-	AL	-	4 4 - -	1	STOREFRONT DOOR
102	3'-0" x 7'-0"	2A	AL/GL	-	1/4"	-	AL	-	4 4 - -	1	STOREFRONT DOOR
103	3'-0" x 7'-0"	2A	AL/GL	-	1/4"	-	AL	-	4 4 - -	1	STOREFRONT DOOR
104	3'-0" x 7'-0"	2A	AL/GL	-	1/4"	-	AL	-	4 4 - -	1	STOREFRONT DOOR
105	3'-0" x 7'-0"	2A	AL/GL	-	1/4"	-	AL	-	4 4 - -	1	STOREFRONT DOOR
106	3'-0" x 7'-0"	2A	AL/GL	-	1/4"	-	AL	-	4 4 - -	1	STOREFRONT DOOR
107	3'-0" x 7'-0"	2A	AL/GL	-	1/4"	-	AL	-	4 4 - -	1	STOREFRONT DOOR
108	3'-0" x 7'-0"	2A	AL/GL	-	1/4"	-	AL	-	4 4 - -	1	STOREFRONT DOOR
109	3'-0" x 7'-0"	2A	AL/GL	-	1/4"	-	AL	-	4 4 - -	1	STOREFRONT DOOR
110	3'-0" x 7'-0"	2A	AL/GL	-	1/4"	-	AL	-	4 4 - -	1	STOREFRONT DOOR
121	3'-0" x 7'-0"	2B	HM	PAINT	-	3A	HM	PAINT	6 6 - -	2	EXTERIOR MAN DOOR
122	3'-0" x 7'-0"	2B	HM	PAINT	-	3A	HM	PAINT	6 6 - -	2	EXTERIOR MAN DOOR
123	3'-0" x 7'-0"	2B	HM	PAINT	-	3A	HM	PAINT	6 6 - -	2	EXTERIOR MAN DOOR
124	3'-0" x 7'-0"	2B	HM	PAINT	-	3A	HM	PAINT	5 5 - -	2	EXTERIOR MAN DOOR
125	3'-0" x 7'-0"	2B	HM	PAINT	-	3A	HM	PAINT	5 5 - -	2	EXTERIOR MAN DOOR
126	3'-0" x 7'-0"	2B	HM	PAINT	-	3A	HM	PAINT	5 5 - -	2	EXTERIOR MAN DOOR
127	3'-0" x 7'-0"	2B	HM	PAINT	-	3A	HM	PAINT	5 5 - -	2	EXTERIOR MAN DOOR
128	3'-0" x 7'-0"	2B	HM	PAINT	-	3A	HM	PAINT	5 5 - -	2	EXTERIOR MAN DOOR



SHEET

BUILDING FLOOR PLAN NOTES

REVISIONS

ITEM	DATE	BY
1	5/24/04	MAM

INFORMATION

PROJECT ARCHITECT	SPS
DRAWN BY	MAM
PROJECT NUMBER	CDC-03-253
ISSUED FOR	CONSTRUCTION
DATE	MAY 24, 2004
SHEET NO.	

A1.1